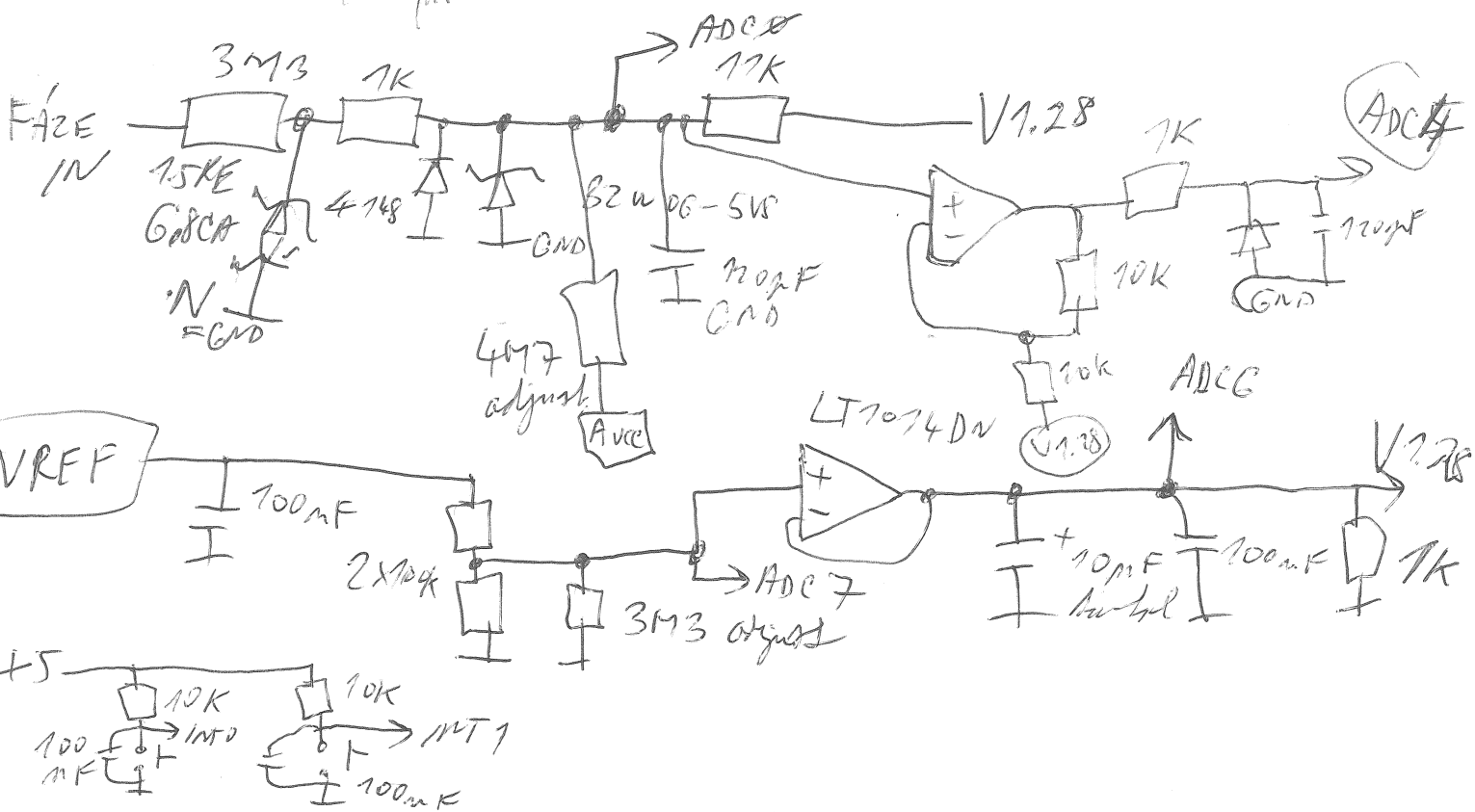
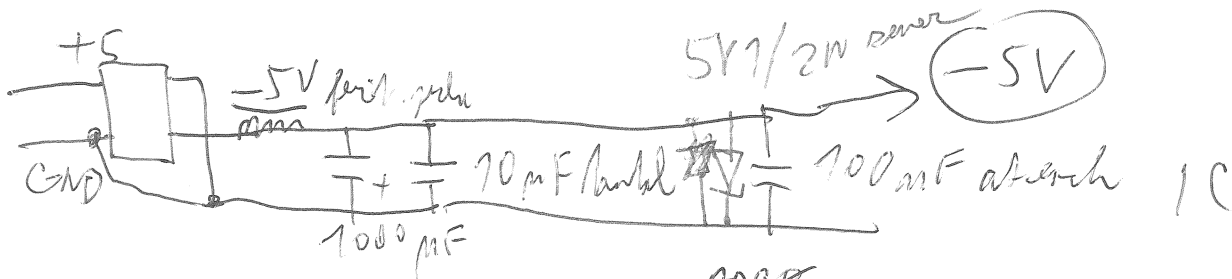
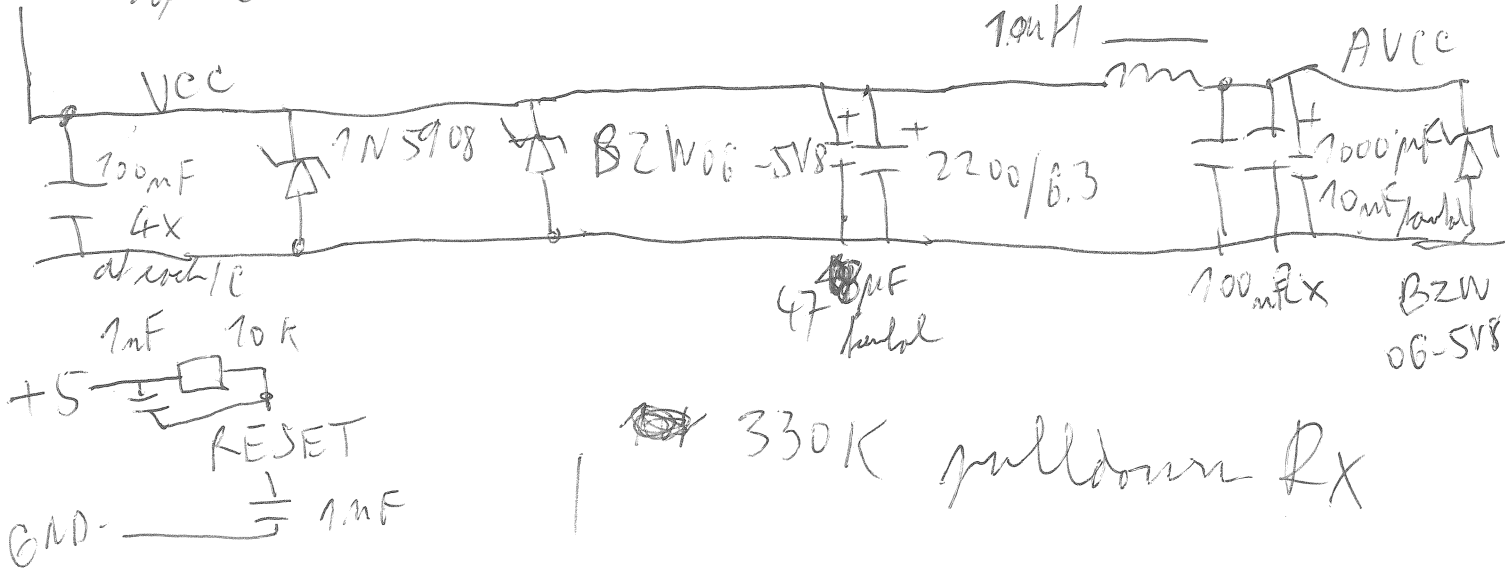


WATT METER

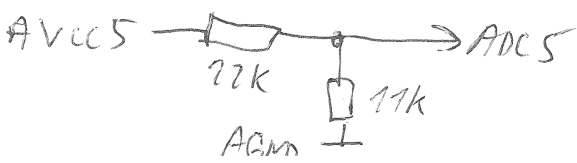
ATMEGA 644, 20MHz with 18pF, LED as usual
 (BC337, 470K light) 3K3 constant

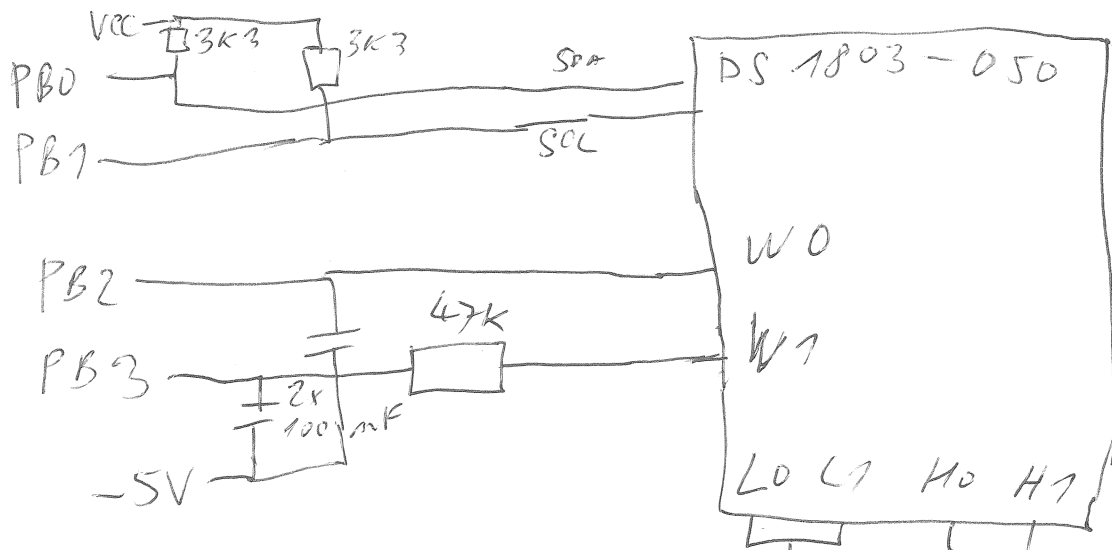
~~OK to proceed~~

5V adapter



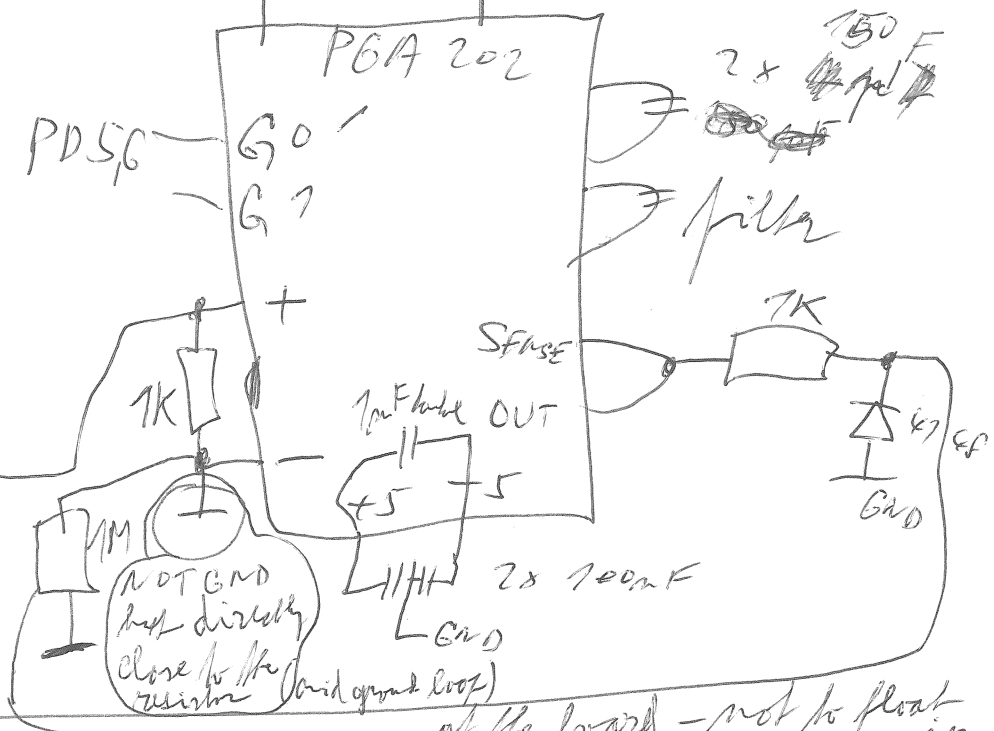
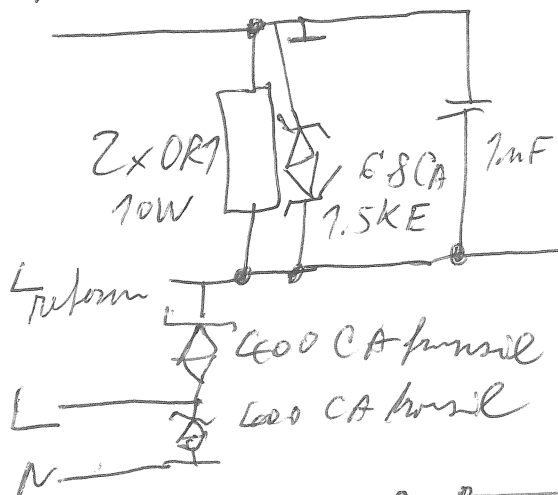
NOTE: connect GND to N





pin 6 $3.73 \mu s$ of DS
 pin 9 of PGA 202 $7.14 \mu s$

N+GND



at the board - not to float in air with detached connector

