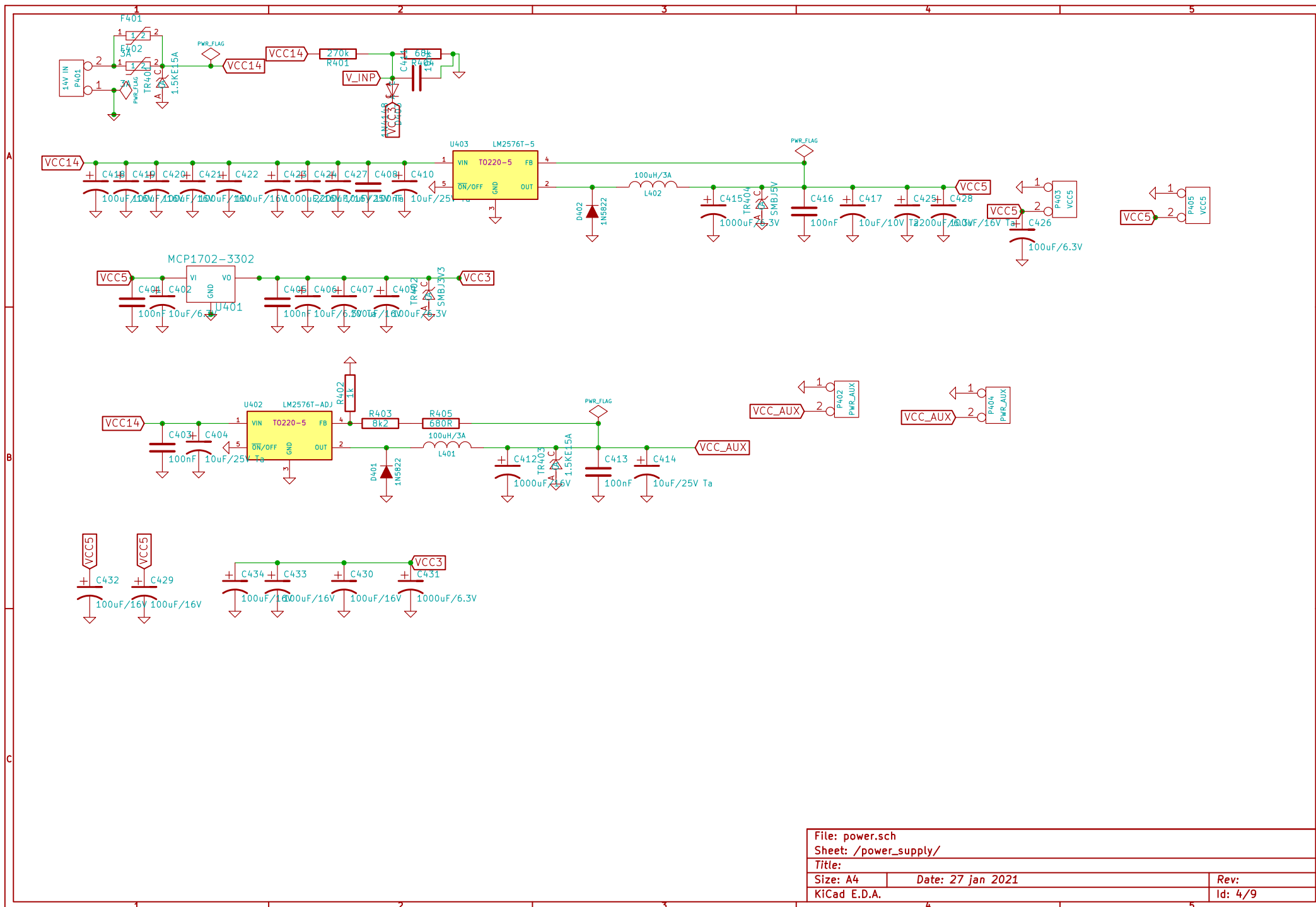
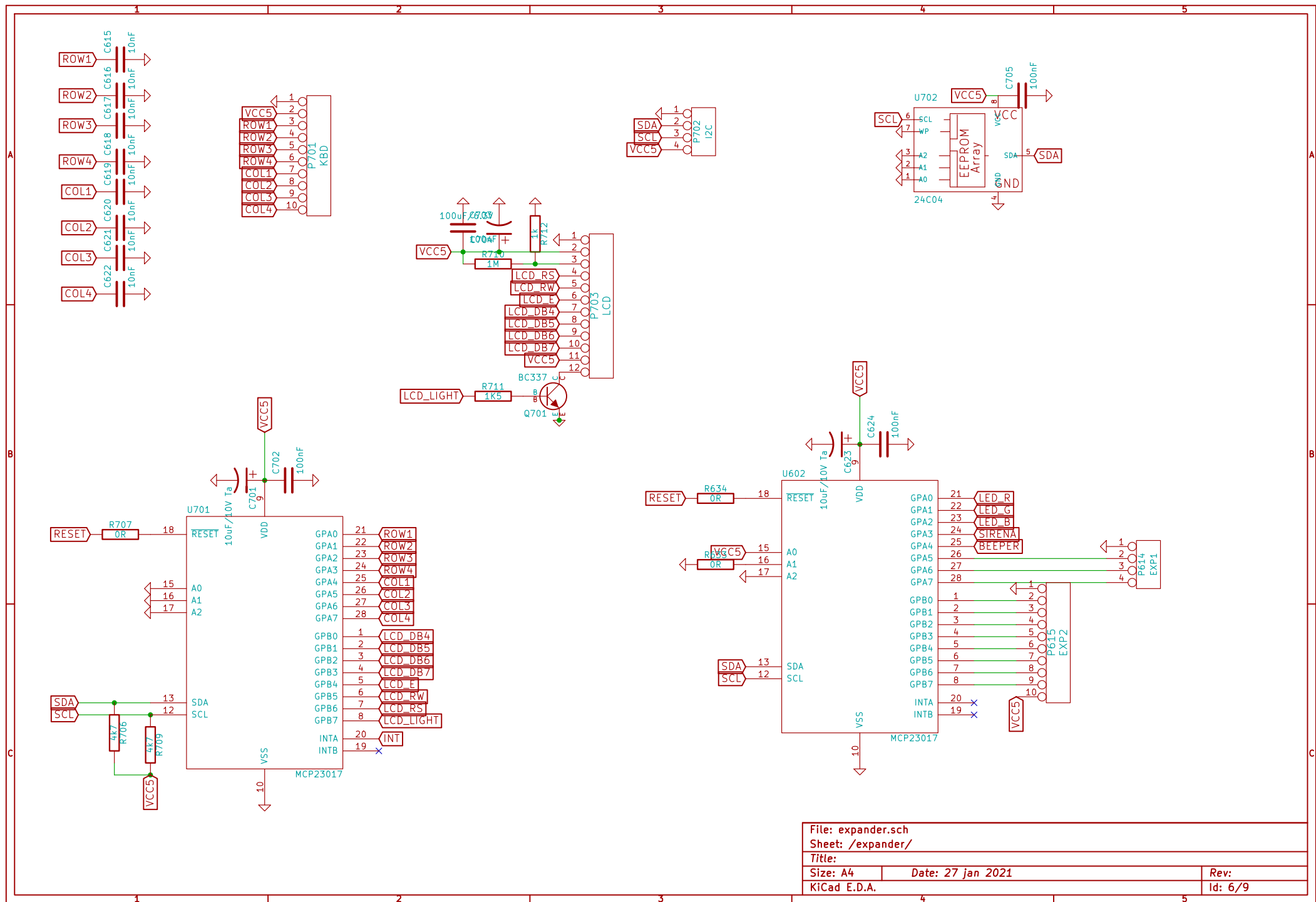


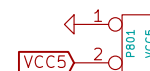
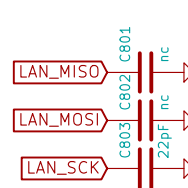
GPIO0 might be used as RSSI output in receive mode
 GPIO1,2 then has to be configured as input

File: comm433.sch		
Sheet: /comm433/		
Title:		
Size: A4	Date: 27 jan 2021	Rev:
KiCad E.D.A.		Id: 2/9

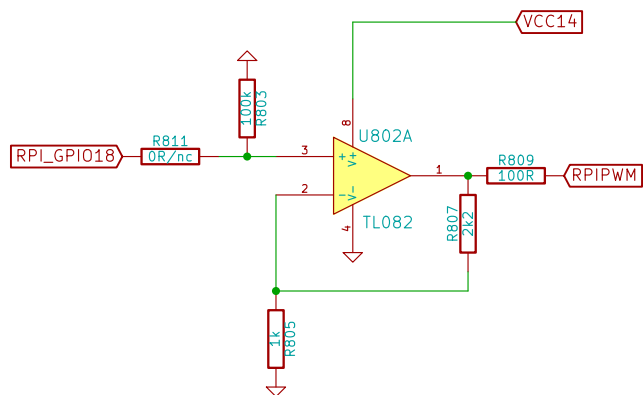
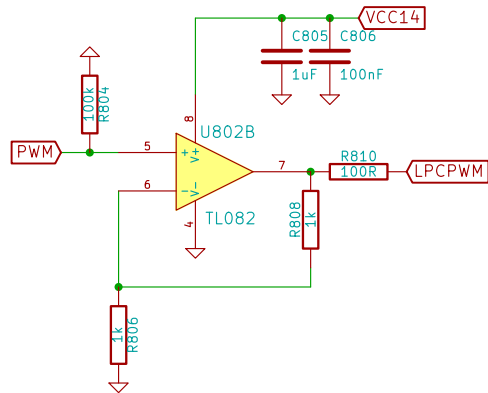
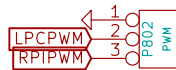


File: power.sch		
Sheet: /power_supply/		
Title:		
Size: A4	Date: 27 jan 2021	Rev:
KiCad E.D.A.		Id: 4/9





File: lan.sch		
Sheet: /LAN/		
Title:		
Size: A4	Date: 27 jan 2021	Rev:
KiCad E.D.A.		Id: 7/9



File: pwm.sch		
Sheet: /pwm/		
Title:		
Size: A4	Date: 27 jan 2021	Rev:
KiCad E.D.A.		Id: 8/9

