

Sheet: /avionics_usb/
File: avionics_usb.sch

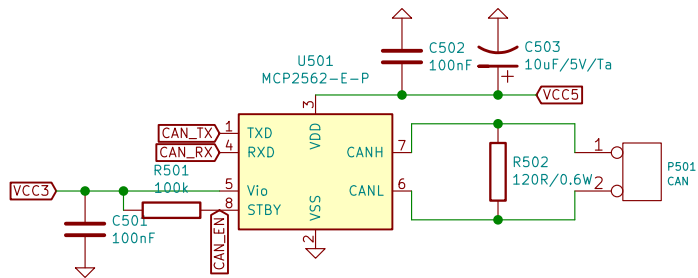
Title:

Size: A4 Date: 6 dec 2018

KiCad E.D.A. kicad 5.0.1

Rev:

Id: 4/10



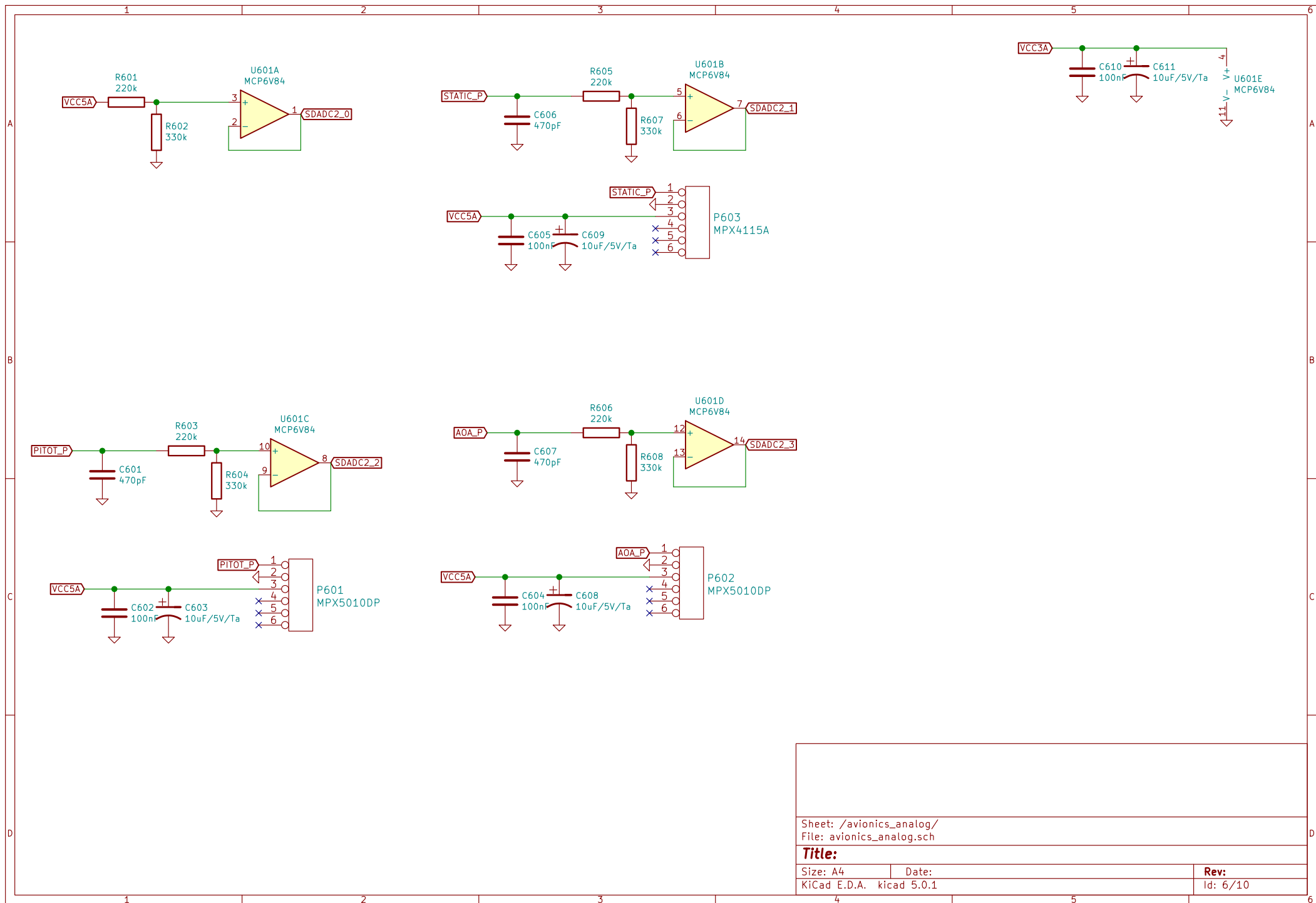
Sheet: /avionics_CAN/
File: avionics_CAN.sch

Title:

Size: A4
KiCad E.D.A. kicad 5.0.1

Date:

Rev:
Id: 5/10



Sheet: /avionics_analog/
File: avionics_analog.sch

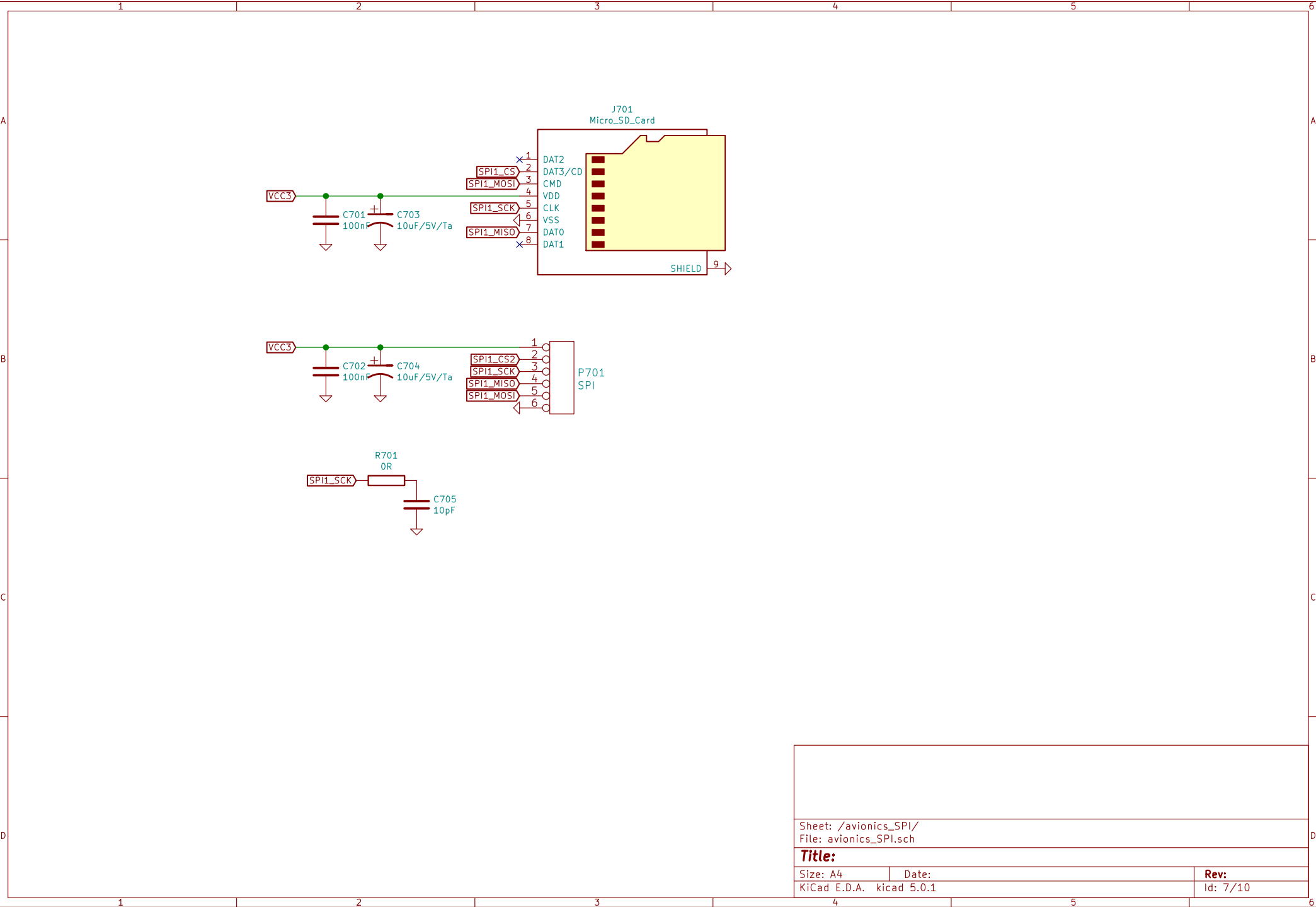
Title:

Size: A4
KiCad E.D.A. kicad 5.0.1

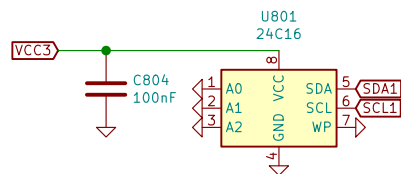
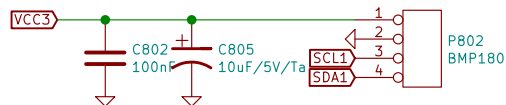
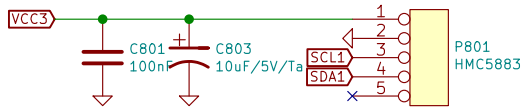
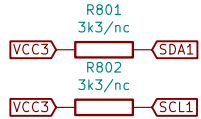
Date:

Rev:

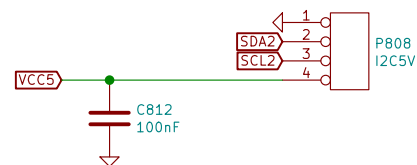
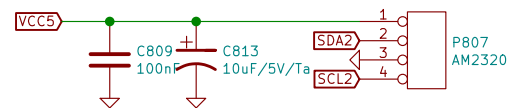
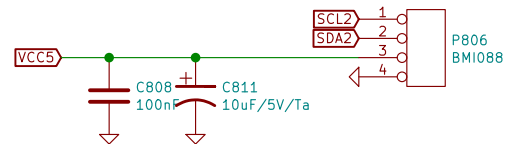
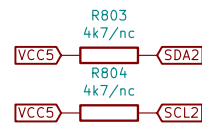
Id: 6/10



do not occupy pullups if they are already
present on a connected module



do not occupy pullups if they are already
present on a connected module



NOTE: BMI088 chip is 3V3 max, but the module contains
LDO regulator and level shifters for I2C

Sheet: /avionics_I2C/
File: avionics_I2C.sch

Title:

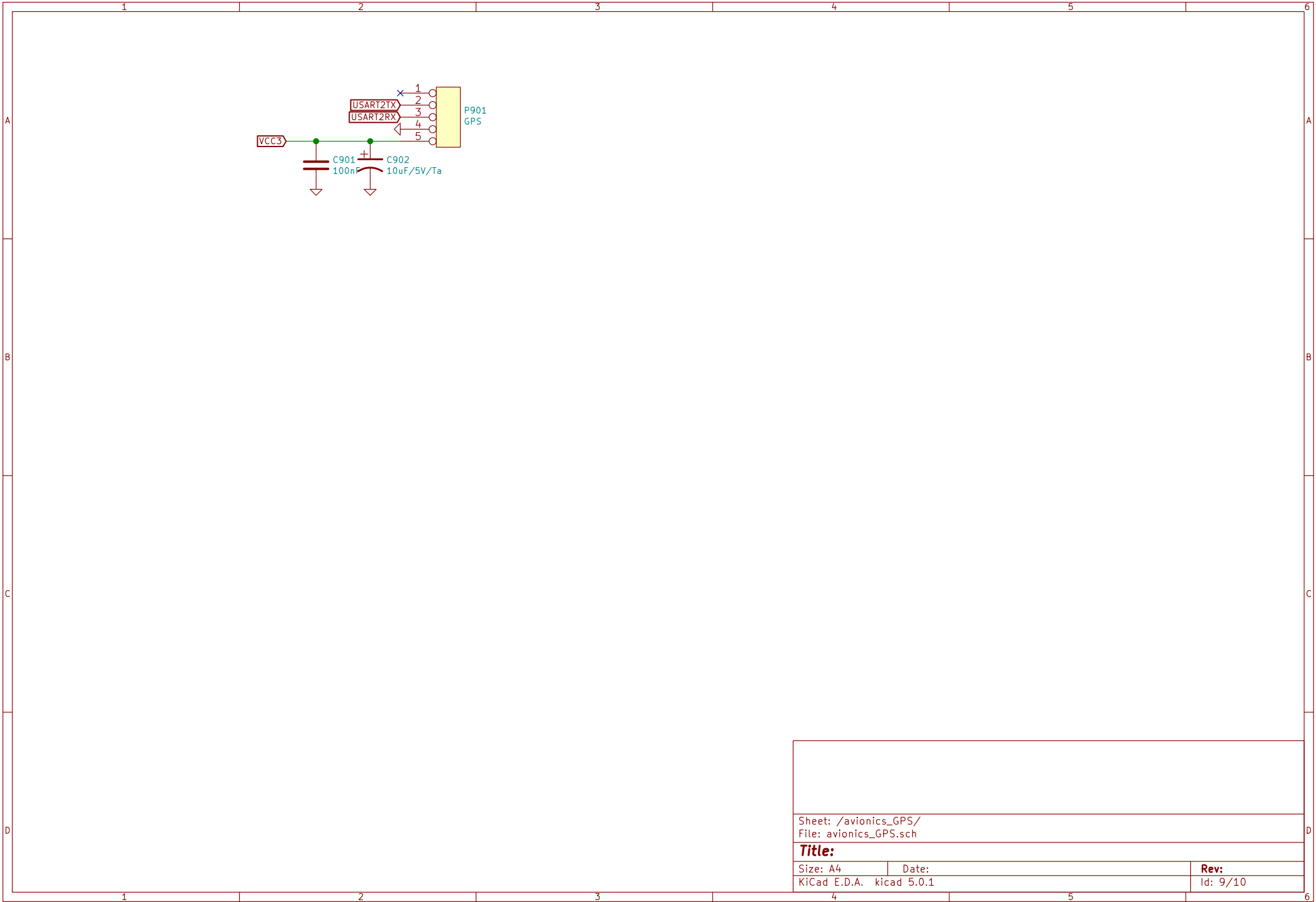
Size: A4

Date:

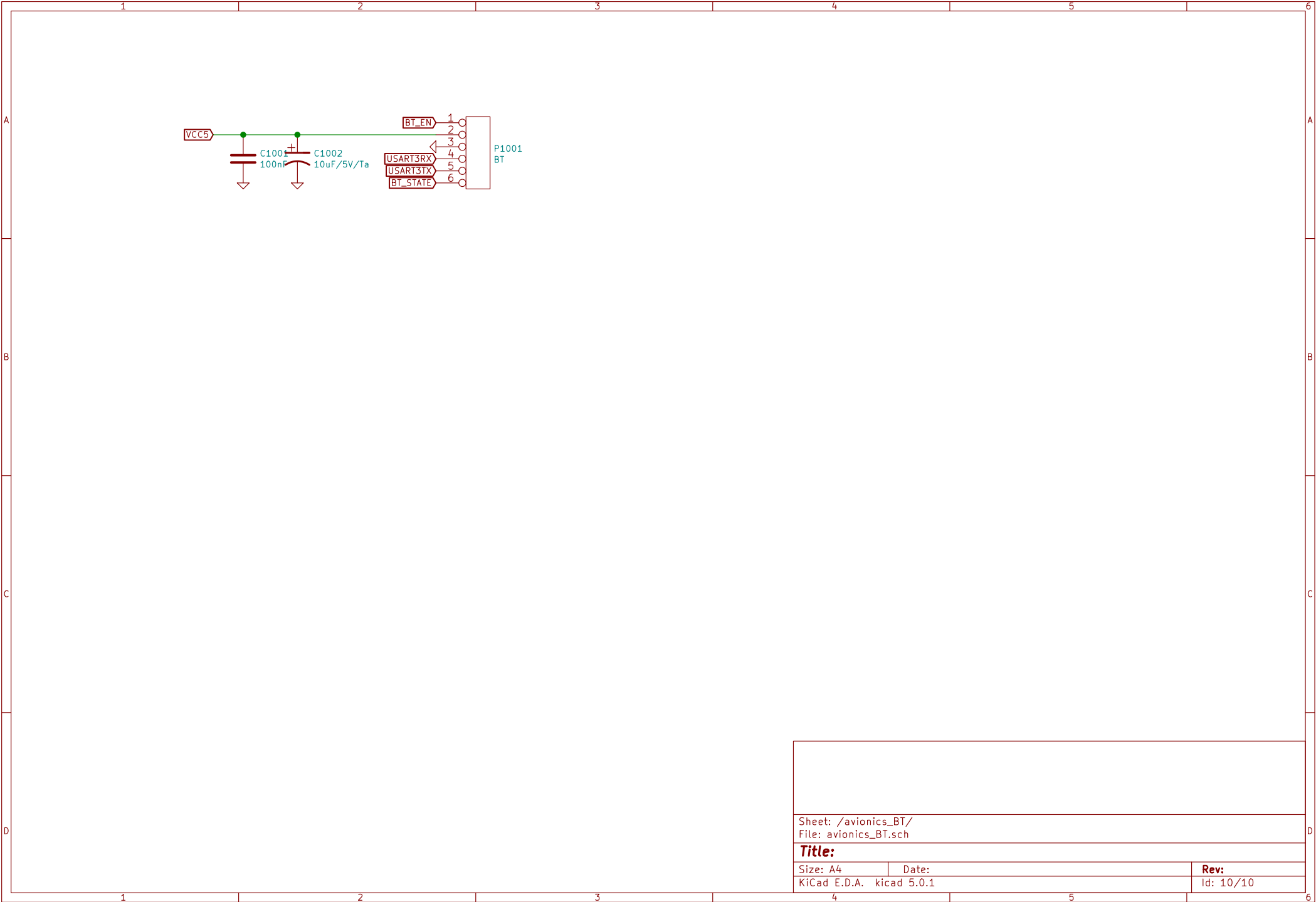
KiCad E.D.A. kicad 5.0.1

Rev:

Id: 8/10



Sheet: /avionics_GPS/ File: avionics_GPS.sch		
Title:		
Size: A4	Date:	Rev:
KiCad E.D.A. kicad 5.0.1		Id: 9/10



Sheet: /avionics_BT/ File: avionics_BT.sch		
Title:		
Size: A4	Date:	Rev:
KiCad E.D.A. kicad 5.0.1		Id: 10/10